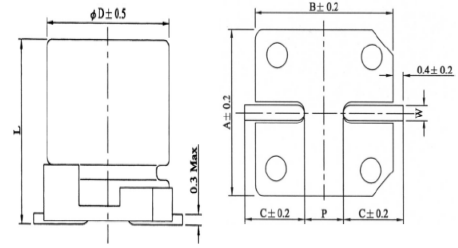


ALUMINUM ELECTROLYTIC CAPACITORS (105°C 3000Hrs) - JV SERIES (SMD)電解電容-3000小時

▲ FEATURES 105°C , 3000 hours assured. Long Life Type.

LEAD SPACING AND DIAMETER Unit:mm

Dψ	L	A	B	C	W	P±0.2
4	5.5±0.3	4.3	4.3	2.0	0.5~0.8	1.0
5	5.5±0.3	5.3	5.3	2.3	0.5~0.8	1.4
6.3	5.5±0.3	6.6	6.6	2.7	0.5~0.8	2.2
6.3	7.7±0.3	6.6	6.6	2.7	0.5~0.8	2.2
8	6.5±0.3	8.3	8.3	3.0	0.7~1.1	2.3
8	10.5±0.5	8.3	8.3	3.0	0.7~1.1	3.1
10	10.5±0.5	10.3	10.3	3.3	0.7~1.1	4.5



▲ GENERAL DIMENSIONS & PERMISSIBLE RIPPLE CURRENT DxL(mm)

uf	6.3V		10V		16V		25V		35V		50V	
	DxL	mA	DxL	mA	DxL	mA	DxL	mA	DxL	mA	DxL	mA
0.1											4x5.5	1
0.22											4x5.5	2.6
0.33											4x5.5	3.2
0.47											4x5.5	5.0
1											4x5.5	8.0
2.2											4x5.5	12
3.3											4x5.5	17
4.7							4x5.5	16	4x5.5	16	5x5.5	22
10					4x5.5	18	4x5.5	26	5x5.5	27	6.3x5.5	33
22	4x5.5	32	5x5.5	30	5x5.5	31	6.3x5.5	44	6.3x5.5	44	6.3x7.7	58
33	5x5.5	33	5x5.5	35	6.3x5.5	48	6.3x5.5	58	6.3x7.7	58	8x10.5	140
47	5x5.5	36	6.3x5.5	52	6.3x5.5	51	6.3x5.7	66	8x10.5	93	8x10.5	170
100	6.3x5.5	68	6.3x7.7	81	6.3x7.7	83	8x10.5	118	10x10.5	155	10x10.5	300
220	6.3x7.7	120	8x10.5	142	10x10.5	222	10x10.5	300	10x10.5	340		
330	8x10.5	230	10x10.5	280	10x10.5	305	10x10.5	395				
470	10x10.5	290	10x10.5	305	10x10.5	330						
1000	10x10.5	360										

▲ SPECIFICATIONS

Items	Performance								
Operating Temperature Range	- 40°C ~ + 105°C								
Capacitance Tolerance	±20% (at 120Hz, 20°C)								
Leakage Current (at 20°C)	I ≤ 0.01CV ro 3(μ A) whichever is greater(after 2 minutes) Where, C=rated capacitance in μ F. V=rated DC working voltage in V.								
Dissipation Factor (Tan δ at 120Hz, 20°C)	Rated Voltage	6.3	10	16	25	35	50		
	DF(%)max	28	24	20.00	16	13	12.00		
Low Temperature Characteristics(at 120Hz)	Impedance ratio shall not exceed the values given in the table below.								
	Rated Voltage			6.3	10	16	25	35	50
	Impedance Ratio	Z(- 25°C)/Z(+20°C)			4	3	2	2	2
Z(- 40°C)/Z(+20°C)			10	7	5	3	3	3	
Load Life Test	Test condition								
	Duration time		3000Hrs						
	Ambient temperature		+ 105°C						
	Applied voltage		Rated DC working voltage						
	Capacitance Change (after test requirement at +20°C)		Within ±30% of initial value						
	Dissipation Factor		Less than 300% of specified value						
	Leakage Current		Less than specified value						
Shelf Life Test	Test time:1000 hrs,other items are the same as those for the load life test.								

ORDER: JV 10U 16V 4x5.5 SMD